



2G GSM mini controller

Model: x31-3L

User manual

WWW.NEW-WORLD-SECURITY.COM

2017







We would like to thank you all for purchasing this New World Security product. We trust you will see the unique benefits of using this professionally designed and engineered product.


This Plug and play GSM mini controller, model x31-3L has been developed, through a growing demand to control electronic equipment's such like (Gate , garage doors, barriers, servers, fans, boilers) by GSM network form mobile phone.

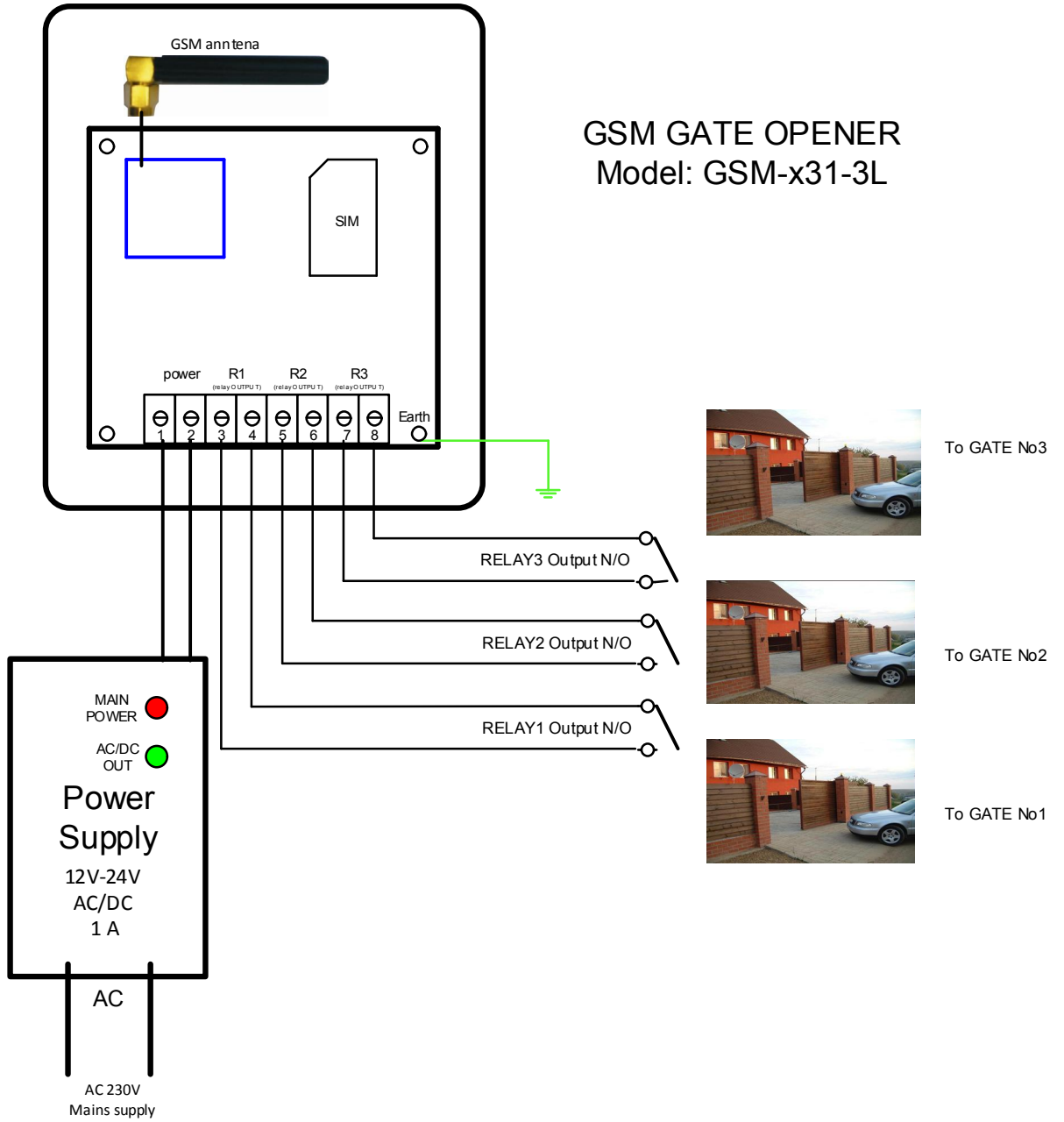
GSM x31-3L controller is easy to install and easy to programming without external computer or hard user manuals.

Safety Instructions:

Please read and follow these safety guidelines in order to maintain safety of operators and people around:

-  GPRS communicator contains a radio transceiver operating in:
Quad-Band GSM/GPRS 850/900/1800/1900MHz.
-  Don't use the system where it can interfere with other devices and cause any potential danger.
-  Don't use the system with medical devices if this is required in the manual of the medical device.
-  Don't use the system in hazardous environment.
-  Don't expose the system to high humidity, chemical environment or mechanical impacts.
-  Don't attempt to personally repair the system.

-  Any system repairs must be done only by qualified, personnel. Mains power must be disconnected before any installation or tuning work starts. The system installation or maintenance must not be done during stormy conditions.



Technical Specifications

Power Supply	12-24V AC/DC 1A
Current Used in Standby Mode	44mA
Current Used in transmitting mode	120MA
GSM Modem Frequency	Quad-Band GSM/GPRS/ 850/900/1800/1900MHz
Communications	Voice Calls, SMS
Administrator number	1
USERS Numbers	49
Relay Outputs	3 Relay NO (normally open) contacts
Relay contacts max power	< 50V 0.125 A
Operating temperature range	-20..+55o C
GPRS communicator PSB dimensions	75 x 65 x 20mm
PCB weight	50g

LED Illumination

GSM (Blue-flashing)	GSM Network connection
100%,75%,50%,25% (Green-static)	GSM signal power level
In Use (Orange- flashing)	Data transmitting indication
READY (Red-static/flashing)	System ready/ system not ready
POWER (Red-static)	Power +12V

POWER SUPPLY



Before connecting x31-3L controller to any external system's 12VDC power supply, please, make sure that the output is able to maintain peak current consumption of up to 1A max. Otherwise, please, use an external power supply.

IMPORTANT

When mounting GSM antenna, choice a location which is away from human interaction and away from the alarm panel. Route the GSM antenna cable from the GSM controller so that it is separate from the power supply cables. Always ensure the power is off on GSM controller before inserting or removing the SIM card.

New SIM cards will need registering before they can be used. Full details of how this is done, can be found in the SIM card pack. It will normally require that the SIM card is inserted into a mobile phone, a number dialed and instruction followed. While the SIM is in the mobile phone it would be a good time to disable any PIN codes, call diverts, ring back, and disable features such as voicemail and text alerts. Details of how to do this can be found on the SIM card provider's web site or by calling their customer services. For GPRS communicator we recommend use 2G Network SIM cards.

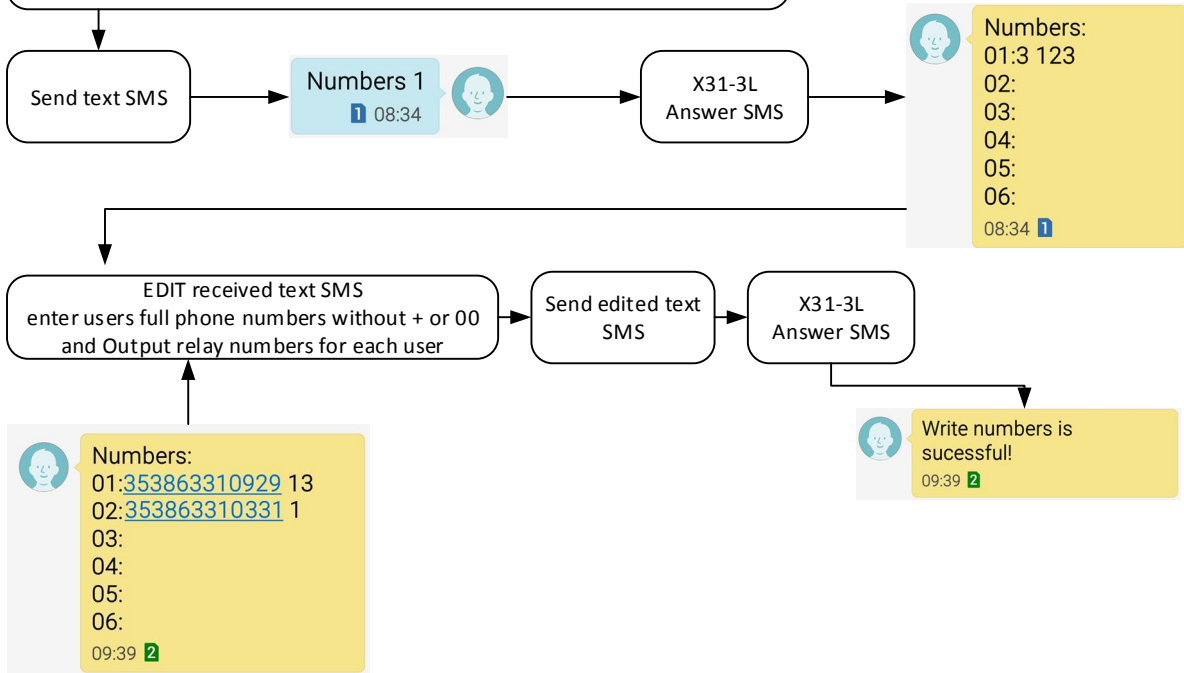
X31-3L WIRING

When the metal enclosure is used, it is necessary to ground the enclosure using yellow/green color cable. For the connection use 0.50 mm² 1 thread cable. For the device connection to input/output connectors use 0.50 mm² 1 thread cable of up to 100 meters length.

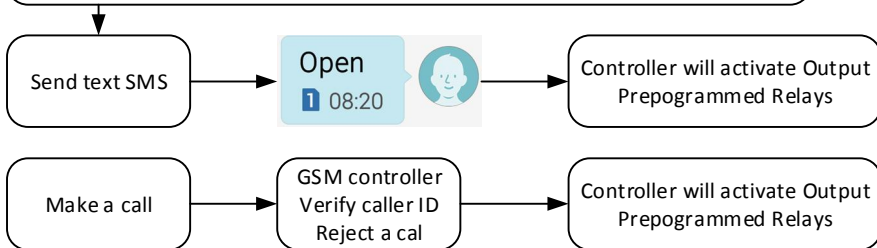
Recommended to install the GSM antenna away from the alarm system to ensure better quality of the audio signal. It is not recommend to install the antenna inside the metal enclosure.

1. **Connect 12-24VAC/DC 1A power supply to terminal (POWER)**
2. **Connect Terminals R1, R2 or R3 to Gate, garage door controller or other external control relay**
3. **Connect GSM antenna**
4. **Insert SIM card**
5. **Power ON power supply**
6. **Go to next step- GSM mini controller programming.**

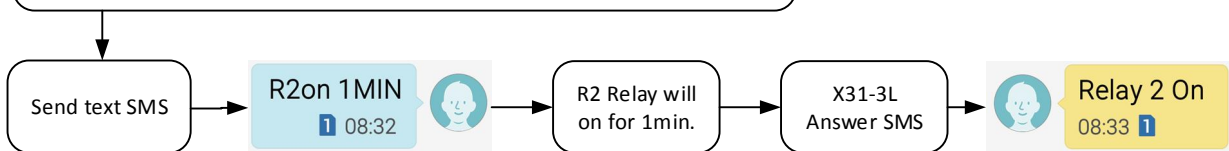
1. To start a remote GSM mini controller programming please , send the following SMS message from user phone number.



2. To test GSM controller programming please , send the following SMS message from user phone number. Or just make a call to GSM controller from the each programmed user phone number.

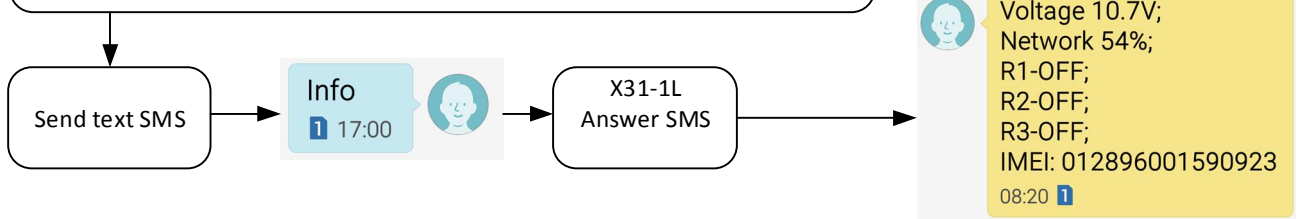


3. To Remote control GSM communicator Outputs Relays please , send the following SMS message from user phone number.

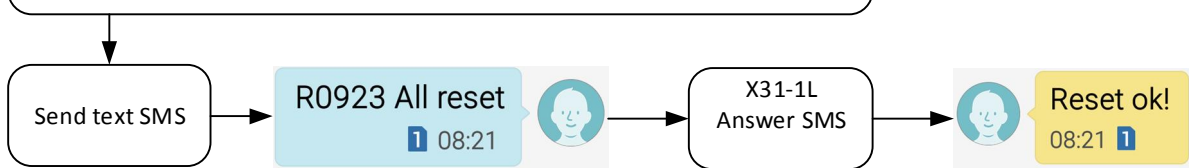


Relay 1 in 5 minutes:	R1on 1MIN
Relay 2 to 8 hours 26 minutes:	R2on 8H26MIN
Relay 3- turn On permanent	R3on
Relay 3- turn Off:	R3off
Format answering SMS:	<RXxx>
Example:	R1on
Example:	R1off

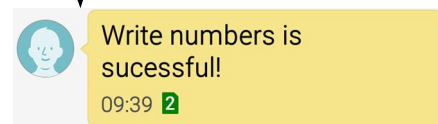
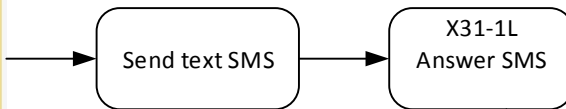
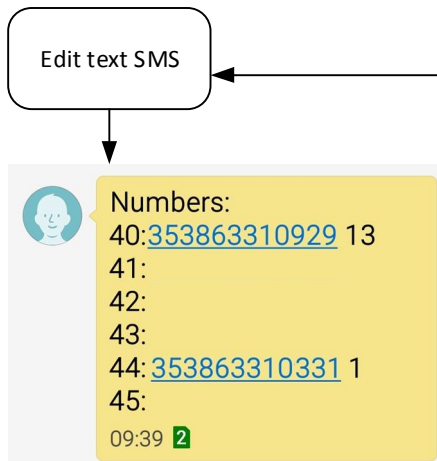
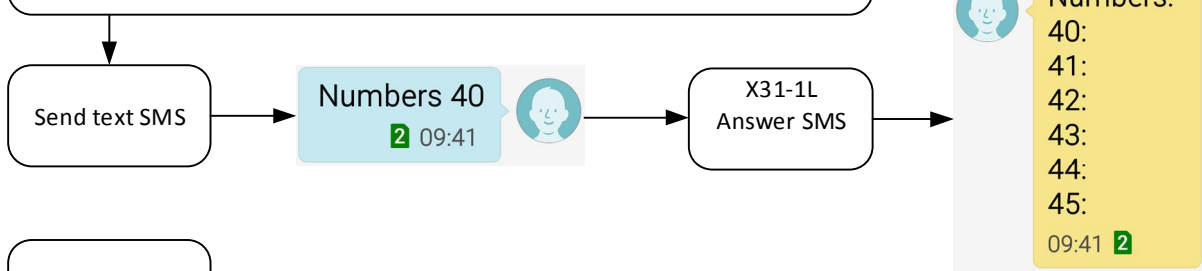
4. To check GSM mini controller systems parameters please , send the following SMS message from user phone number.



5. Reset GSM controller to factory default , please ,send the following SMS message from user phone number. R**** (*-last 4 IMEI numbers)



6. To add/delete User numbers , please ,send the following SMS message from user phone number.



POSSIBLE FAULTS

GSM LED is off or not flashing	<ul style="list-style-type: none">• Not connected power supply• Circuit not properly connected• Blown fuse• No GSM network signal
READY LED flashing several times per second	<ul style="list-style-type: none">• No GSM Network• No Call credits on SIM card
Sent Text SMS not responding	<ul style="list-style-type: none">• Check SMS text letters , Caps, Spaces• No credits on SIM card number

TECH. SUPPORT

For Tech. Support please send enquiry to gsmalarms@eircom.net

Made in EU

NEW WORLD SECURITY

Keepers Cottage,

3 Dublin Road

Leixlip, Co.Kildare

Ireland

(for Post only, No collection)

WWW.NEW-WORLD-SECURITY.COM